

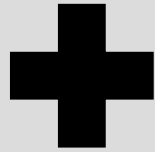
Riverside Land Conservancy

Rachael Hamilton





Nonprofit
Funding Sources



Community
Partnerships



Successful Projects



Cienega Canyon Preserve



Colton Dunes



Mt. Rubidoux Peak



Stepp Aguanga



Meridian Conservation Area



Santa Ana River



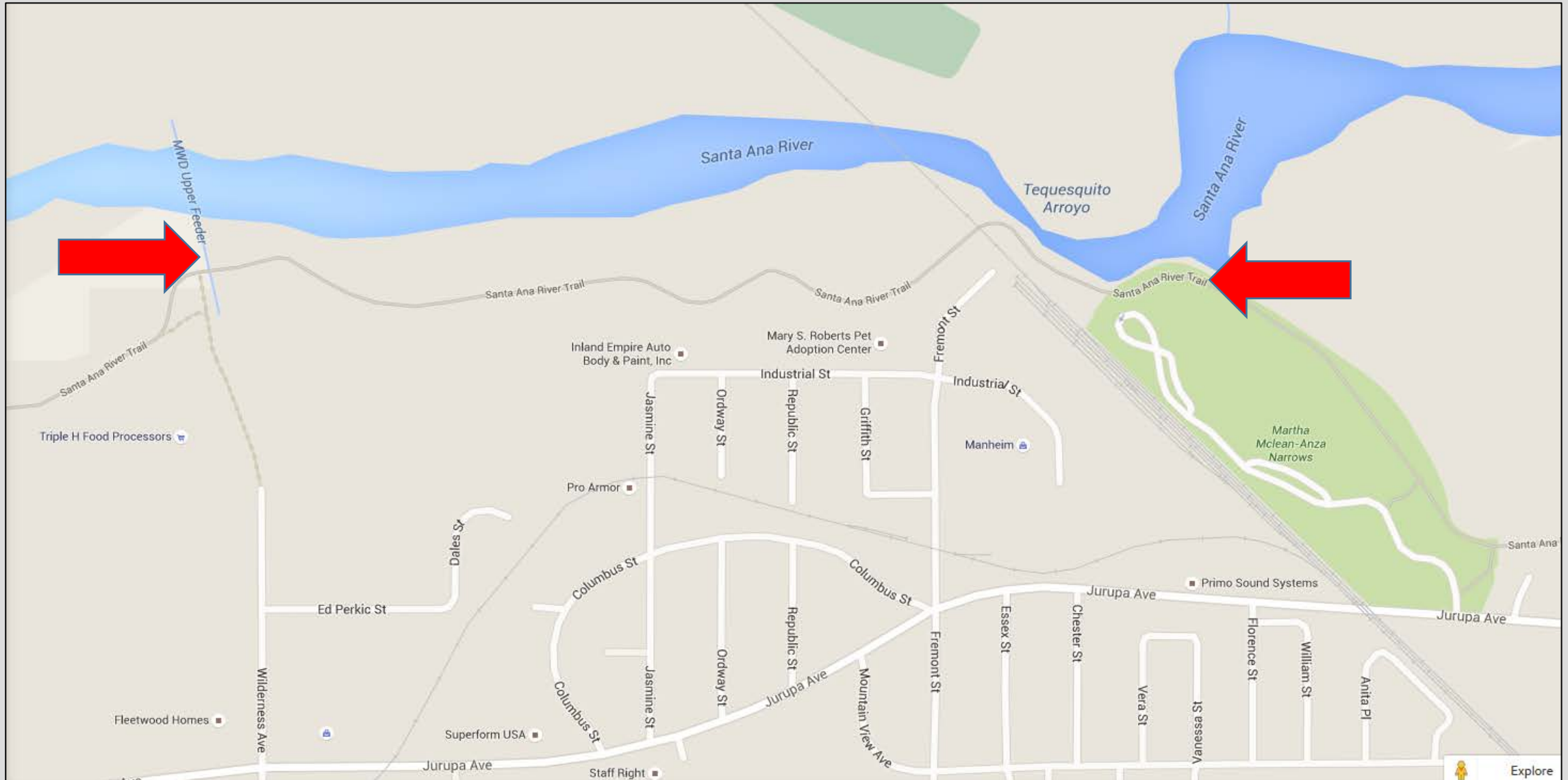
Santa Ana River
TRUST



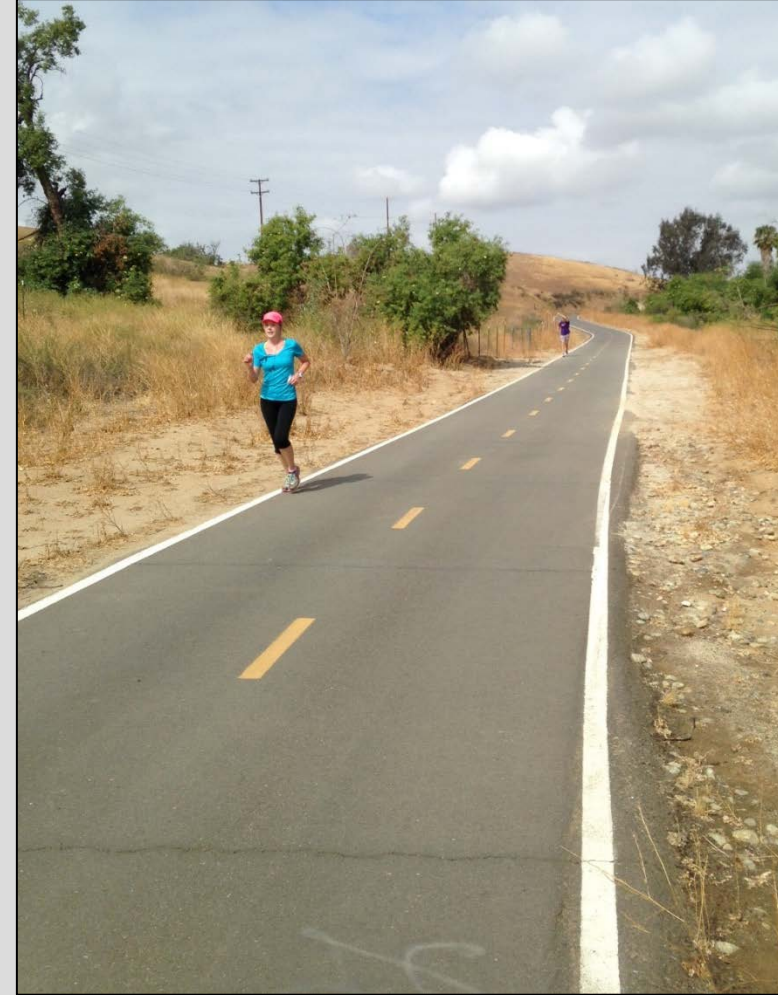
Adopt-a-Trail Project



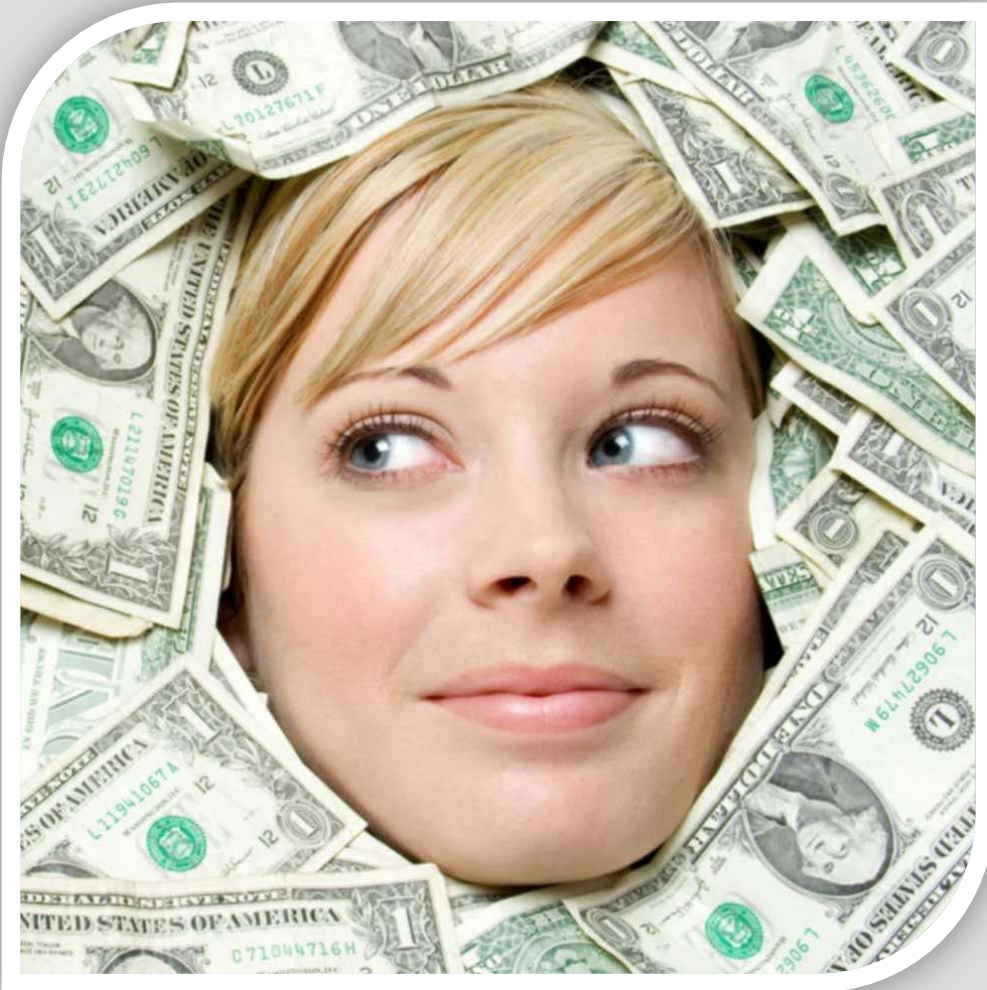
Adopt-a-Trail Project



Adopt-a-Trail Project



#1. Grant writing & #2. Partnerships



COMING TOGETHER
IS A BEGINNING.
**KEEPING
TOGETHER**
IS PROGRESS.
**WORKING
TOGETHER**
IS SUCCESS.
-HENRY FORD

InspirationalThinkTank.Com

Funding Opportunities

- Corporate donors



- Community foundations



Funding Opportunities

- Private Foundations



- Local government pools



COUNTY OF RIVERSIDE
CALIFORNIA

- Settlement funds



Funding Opportunities

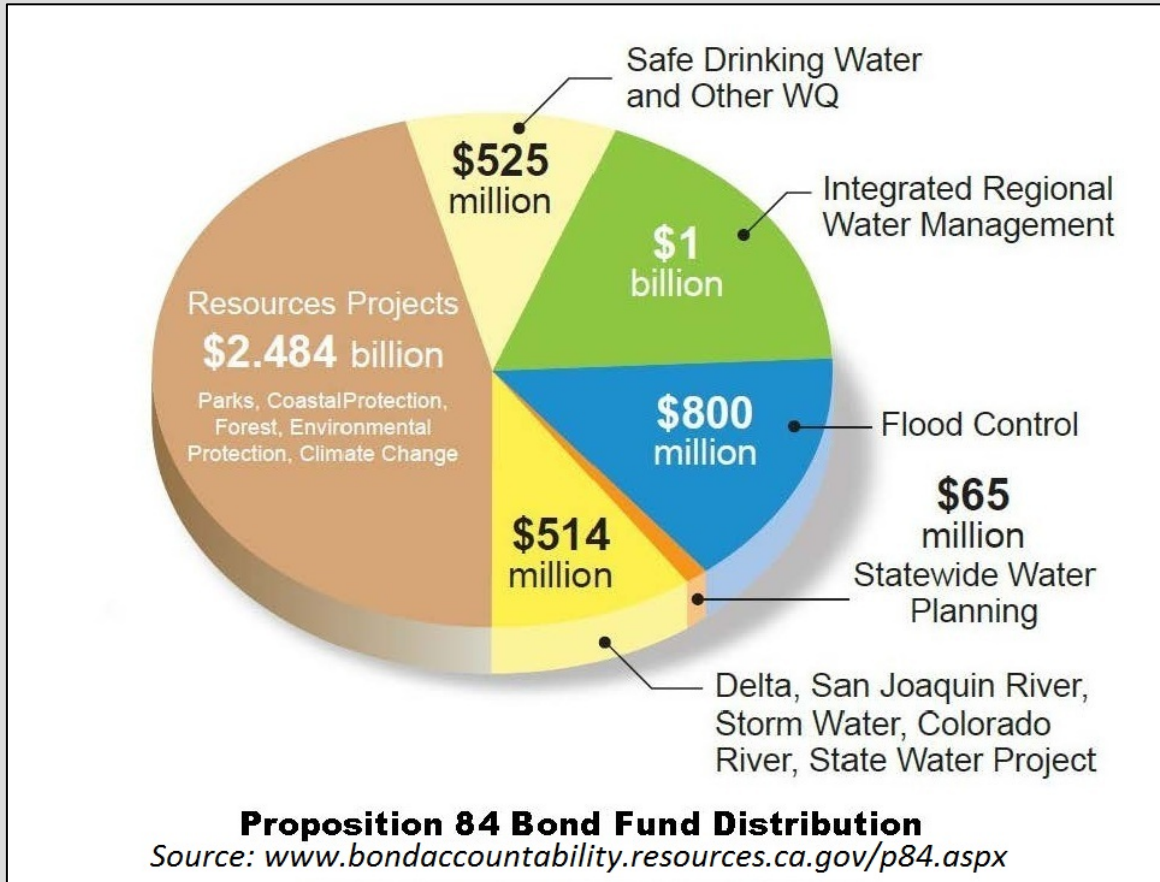
- Individual donors

-In 2014, the largest source of charitable giving came from individuals at \$258.51 billion!



Funding Opportunities

- Government bonds



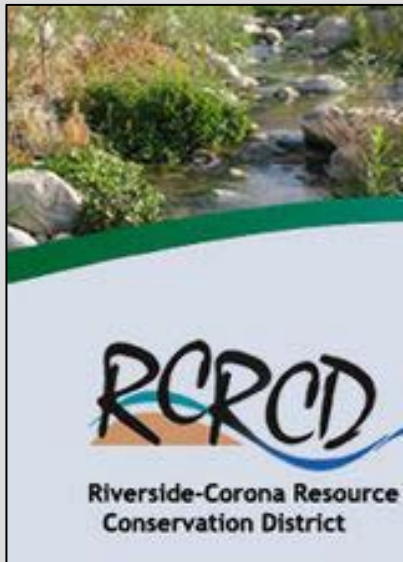
In-Kind Support

- Local businesses: gift cards & goods



In-Kind Support

- Community groups: resources & expertise



In-Kind Support

- Volunteers





Patagonia Grant Award

Local Government Agencies:

- City of Riverside Parks, Recreation & Community Services Dept
- City of Riverside Public Works Dept

*I can do things you cannot,
you can do things I cannot;
together we can do great things.*

-Mother Teresa



Meeting along the Santa Ana River

CA Native
Garden

Adopt-a-Trail Project



Adopt-a-Trail Project



Santa Ana River Trust
VOLUNTEER opportunity!

Help us plant along the
Santa Ana River Trail.

11.7.15 @9am

email rachael@riversidelandconservancy.org
for more details

Adopt-a-Trail Project

CA Native
Garden



Adopt-a-Trail Project



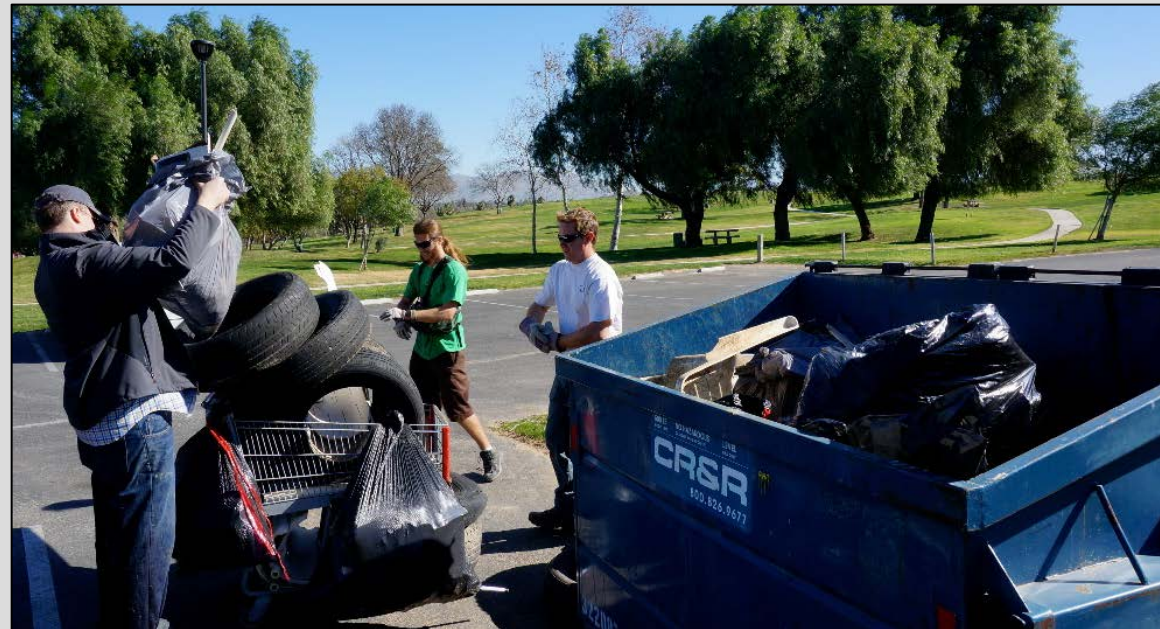
Adopt-a-Trail Project

Graffiti
removal



Adopt-a-Trail Project

Litter cleanup



Adopt-a-Trail Project

Actual Project Revenue:

\$26,500

**Patagonia, Bank of America,
Riverside County Community
Improvement Designation (CID)
Fund, Settlement Funds, Private
Donations*

Match from City:

\$3,200

**CA Native
garden*

Value of in-kind support:

\$20,000

**Volunteers = \$14,000*

**Local businesses/community groups = \$6,000*

TOTAL VALUE OF LEVERAGED FUNDS = \$23, 200!



Santa Ana River

Rachael Hamilton

rachael@riversidelandconservancy.org

